

IT'S EQUITABLE, ISN'T IT? I GIVE YOU NECTAR AND POLLEN AND YOU SPREAD MY POLLEN TO OTHER FLOWERS.

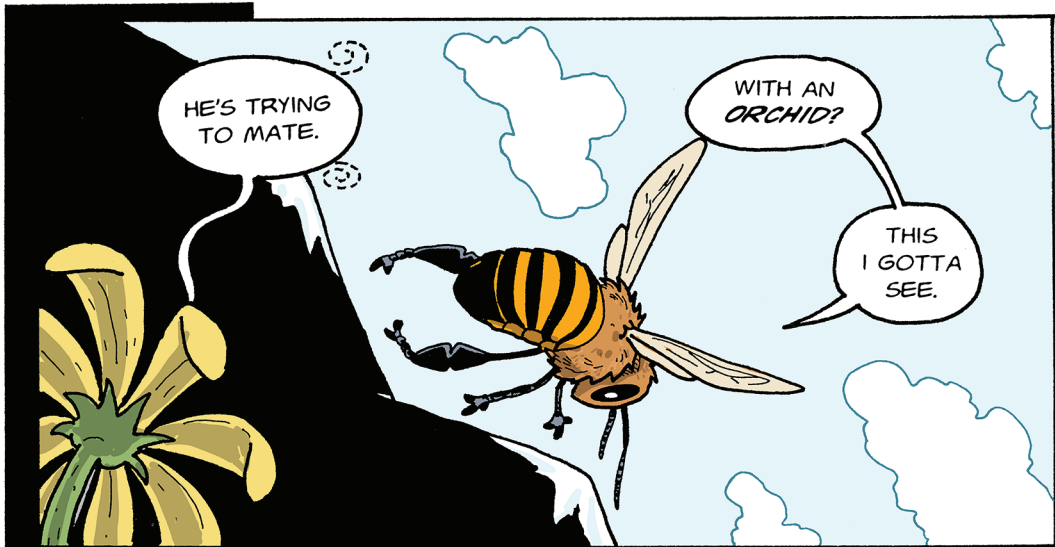
SURE. I GET FOOD FOR THE HIVE AND YOU GET TO REPRODUCE.

WHAT'S THIS ALL ABOUT, BLOOMINGTON?



OH, IT'S THAT ORCHID OVER THERE. SHE MAKES ME SO MAD.

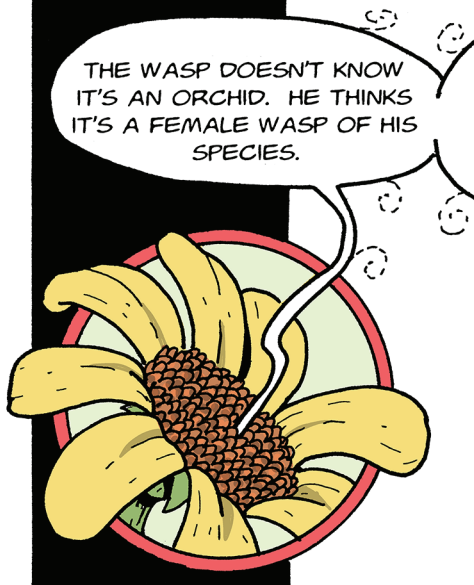
YEAH I SAW THAT EARLIER. WHAT IS THAT GOOFY WASP DOING?



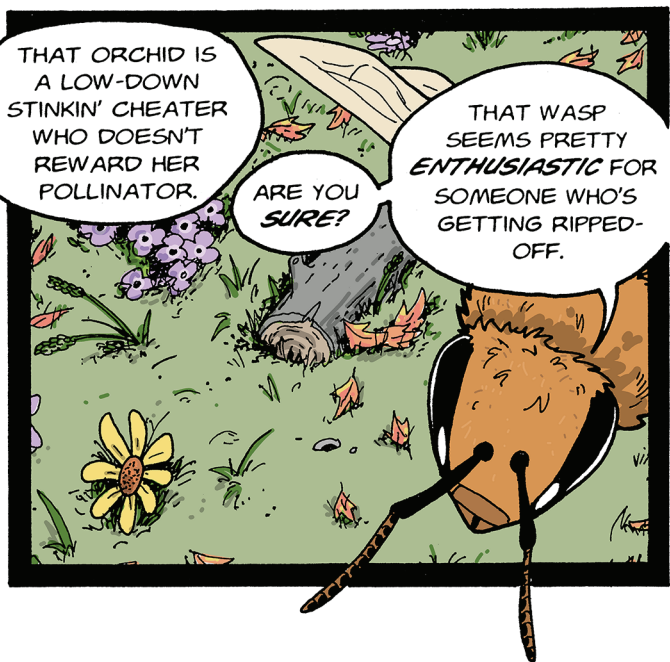
HE'S TRYING TO MATE.

WITH AN ORCHID?

THIS I GOTTA SEE.



THE WASP DOESN'T KNOW IT'S AN ORCHID. HE THINKS IT'S A FEMALE WASP OF HIS SPECIES.

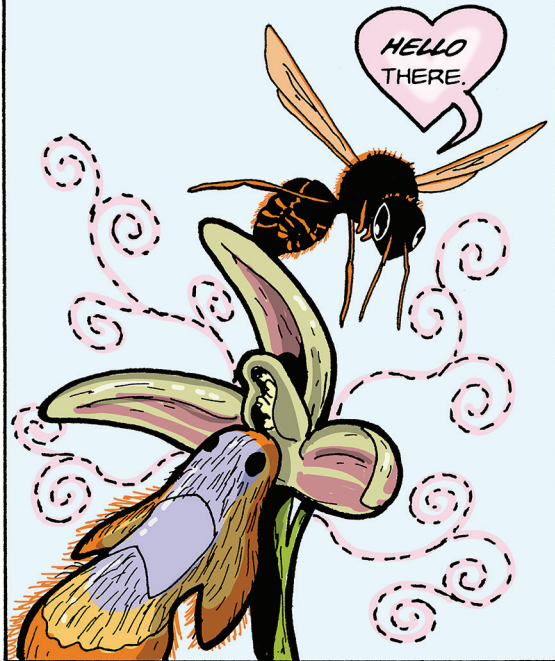


THAT ORCHID IS A LOW-DOWN STINKIN' CHEATER WHO DOESN'T REWARD HER POLLINATOR.

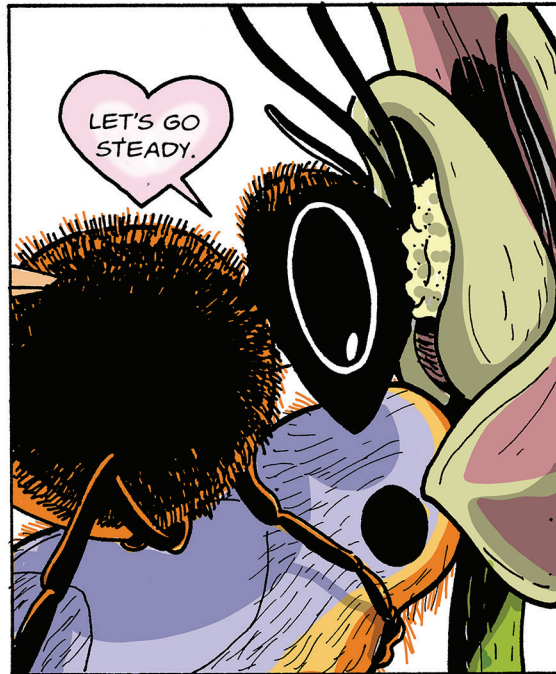
ARE YOU SURE?

THAT WASP SEEMS PRETTY ENTHUSIASTIC FOR SOMEONE WHO'S GETTING RIPPED-OFF.

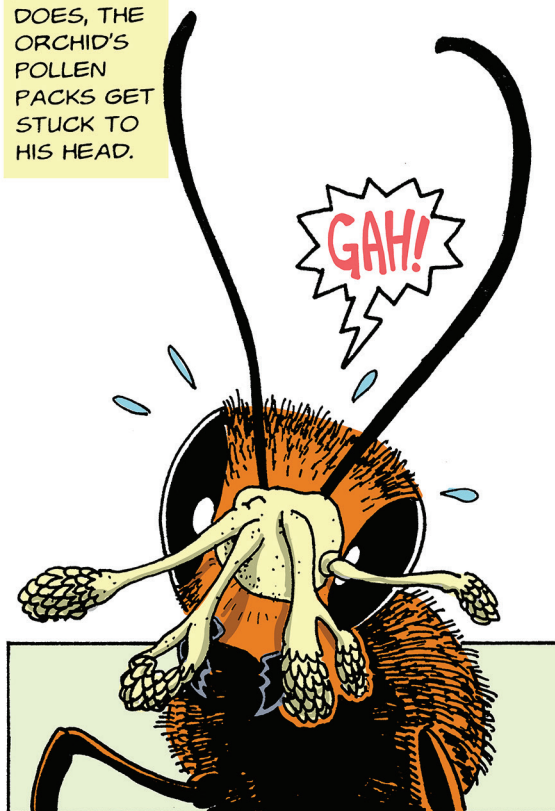
TRUST ME, NYUKI, THAT ORCHID IS A PARASITE. IT PREYS ON THE WASP'S IMPULSE TO MATE BY RELEASING A PERFUME THAT MIMICS THE FEMALE WASP'S MATING PHEROMONE.



TO COMPLEMENT ITS TRICKY SMELL, THE ORCHID ALSO HAS A PETAL THAT LOOKS JUST LIKE A FEMALE WASP. ATTRACTED BY THE SMELL, THE MALE WASP TRIES TO MATE WITH THE "WASP" PETAL.



AS HE DOES, THE ORCHID'S POLLEN PACKS GET STUCK TO HIS HEAD.



EVENTUALLY, HE GIVES UP AND LEAVES, TAKING THE POLLEN WITH HIM WITHOUT RECEIVING ANY NECTAR OR USEABLE POLLEN.



BUT HOW DOES THIS FACILITATE *CROSS* POLLINATION? HE WOULD HAVE TO CARRY THOSE POLLEN PACKS TO ANOTHER CHEATER ORCHID.

SURELY HE WON'T FALL FOR THE SAME TRICK *TWICE*.



HMMMMMM, WHAT'S THAT SMELL OVER THERE?

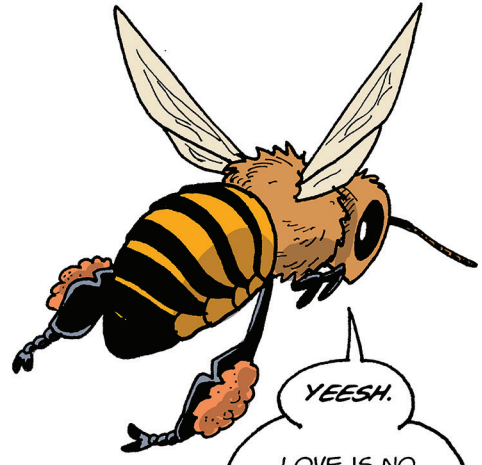
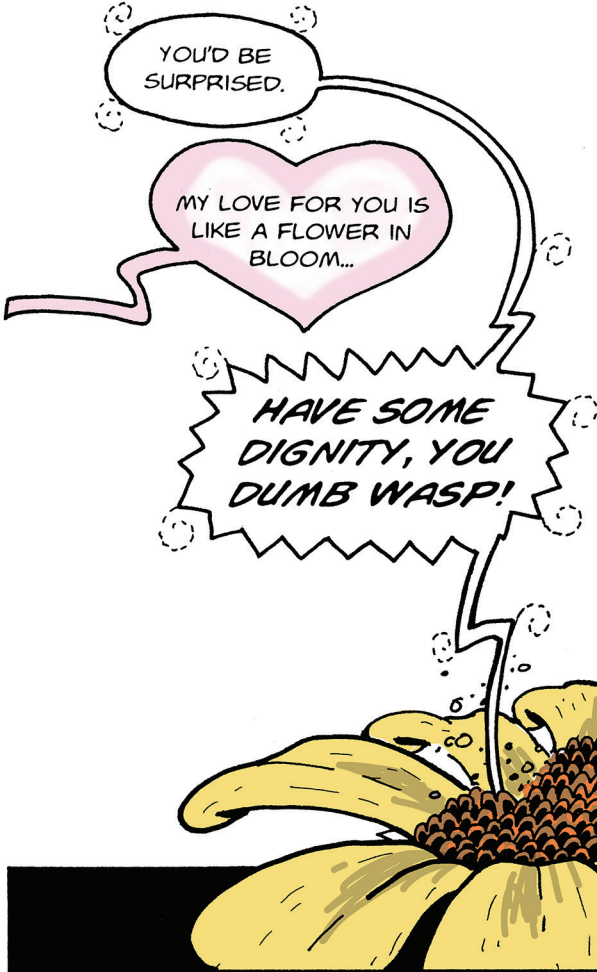
OOO, HELLO, THERE!



YOU'D BE SURPRISED.

MY LOVE FOR YOU IS LIKE A FLOWER IN BLOOM...

HAVE SOME DIGNITY, YOU DUMB WASP!



YEESH.
LOVE IS NO FUN WHEN YOU'VE FALLEN FOR A *STINKER*.